



\*\*\* Seasonal Cocktails \*\*\*

Sotoki	15
<i>Etsu Pacific Gin, Fig Cordial, Lime, Carbonated Salty Pear Juice</i>	
Rotatsu	15
<i>Ginger Toki Whiskey, Laphroaig 10, Umeshu, Lemon Honey, Pear, Oolong Tea</i>	
Roshi	15
<i>Kiyomi Rum, Pear Cordial, Dry Vermouth, Chocolate Bitters, Citrus &amp; Saline Solutions, Smoked Sakura Cherry Perfume</i>	

\*\*\* Signature \*\*\*

Peacock Room	19
<i>Sakura Mancino Vermouth, Sweet Potato Shochu, Yuzu, Tonic</i>	
Volpone	18
<i>Etsu Gin, Wasabi Liqueur, Citrus, Soap Bark</i>	
Salome	19
<i>Sake, Rice Shochu, Etsu Ocean Water, Tomato Liqueur, Umami</i>	
The Death of the Lion	21
<i>Ki No Bi Gin, Yuzu Liqueur, Quinine &amp; Lime Leaf Cordial</i>	
The Black Cat	23
<i>Teeda Rum, Umeshu, Laphroaig, Okinawa Sugar</i>	
Le Mort d'Artur	19
<i>Rice Shochu, Yellow Chartreuse, Clarified Coconut &amp; Pineapple</i>	

\*\*\* Highballs & Chuhais \*\*\*

Toto Sundai	20
<i>Chita Whisky, Soda, Citrus</i>	
Obi	21
<i>Hatozaki Pure Malt, Cold Brew Oolong Sparkling Tea</i>	
Flowers of Edo	24
<i>Nikka from The Barrel, Housemade Yuzu Soda</i>	
Bijin-Ga	21
<i>Sweet Potato Shochu, Soda, Umeshu</i>	
Torii	18
<i>Rice Shochu, Housemade Grapefruit Soda</i>	
Koi	16
<i>Barley Shochu, Soda, Citrus</i>	

*All prices include VAT at the current rate.*

*A discretionary service charge of 15% will be added to your bill.*



# Volume

*One*

“The Yellow Book” was an influential British quarterly illustrated magazine published in the 1890s. Devoted to art and literature, it featured a wide range of genres from short stories and essays to illustrations and portraits. The yellow cover, associated with illicit French novels at the time, was accredited to its first Art Editor, Aubrey Beardsley, who was notorious for his controversial, grotesque and decadent works.

This cocktail journey, through three chapters, takes inspiration from the influences on Aubrey Beardsley’s work, from aestheticism and ukiyo-e art genres to his personal and working relationships with the likes of Oscar Wilde and Edgar Allan Poe.

# Chapter

## *One*

# *Art Nouveau*

In the late 1880s in England, although much of mainstream art and literature still upheld Victorian values and social order, an avant-garde movement of artists and writers began to criticise and satirise Victorian society. Aubrey Beardsley was an active participant in this and went on to become a heavy influence in the Art Nouveau movement. Through his sensational and symbolic style, Beardsley's work blurred gender lines, depicted vices and exposed societal contradictions.

The strong influence of Japonisme and Art Nouveau in Beardsley's controversial works went on to inspire generations of modern artists.

These signature cocktails pay homage to some of Aubrey Beardsley's most renowned influences and accomplishments in the Western world.



Peacock Room

*Decorative Interior by James McNeill Whistler.*

Referred to as a “masterpiece of interior decorative art”, The Peacock Room is one of the most well known works representing the Aesthetic movement. Aubrey Beardsley first visited this piece with his sister Mabel in 1891 in London. Beardsley’s “Peacock Skirt” is said to be his interpretation of Whistler’s “The Princess from the Land of Porcelain”, the centrepiece of The Peacock Room. Beardsley’s piece was given much praise but it also stirred controversy in the community.

*“Things shape themselves before my eyes just as I draw them.” – Aubrey Beardsley*

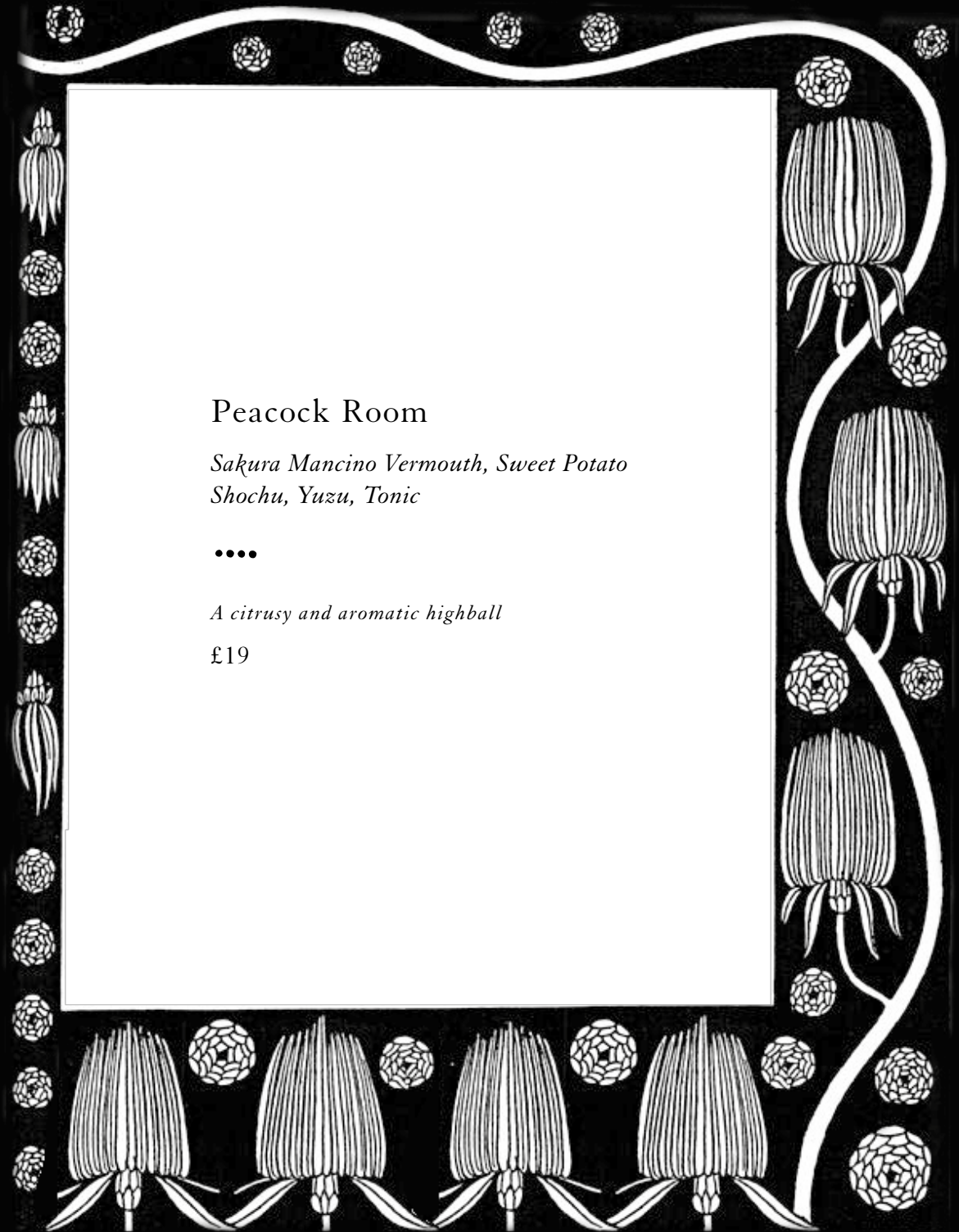
## Peacock Room

*Sakura Mancino Vermouth, Sweet Potato  
Shochu, Yuzu, Tonic*

••••

*A citrusy and aromatic highball*

£19



## The Death of the Lion

*1894 short story by Henry James.*

First published in The Yellow Book, the editors bent the rules of short story writing, allowing James to expand his story beyond the usually strict length limitations.

*“Could not something be done with the idea of the great (the distinguished, the celebrated) artist - man of letters he must, in the case, be - who is tremendously made up to, feted, written to for his autograph, portrait, etc., and yet with whose work, in this age of advertisement and newspaperism, this age of interviewing, not one of the persons concerned has the smallest acquaintance? It would have the merit, at least, of corresponding to an immense reality - a reality that strikes me every day of my life.” - Henry James*

## The Death of the Lion

*Ki No Bi Gin, Yuzu Liqueur,  
Quinine & Lime Leaf Cordial*

••••

*Fresh and herbal this drink takes inspiration  
from a classic gimlet with a yuzu twist*

£21



## Salome

*Sake, Rice Shochu, Etsu Ocean Water,  
Tomato Liqueur, Umami*

•••

*Strong and savoury, a perfect alternative  
to the classic Dirty Martini*

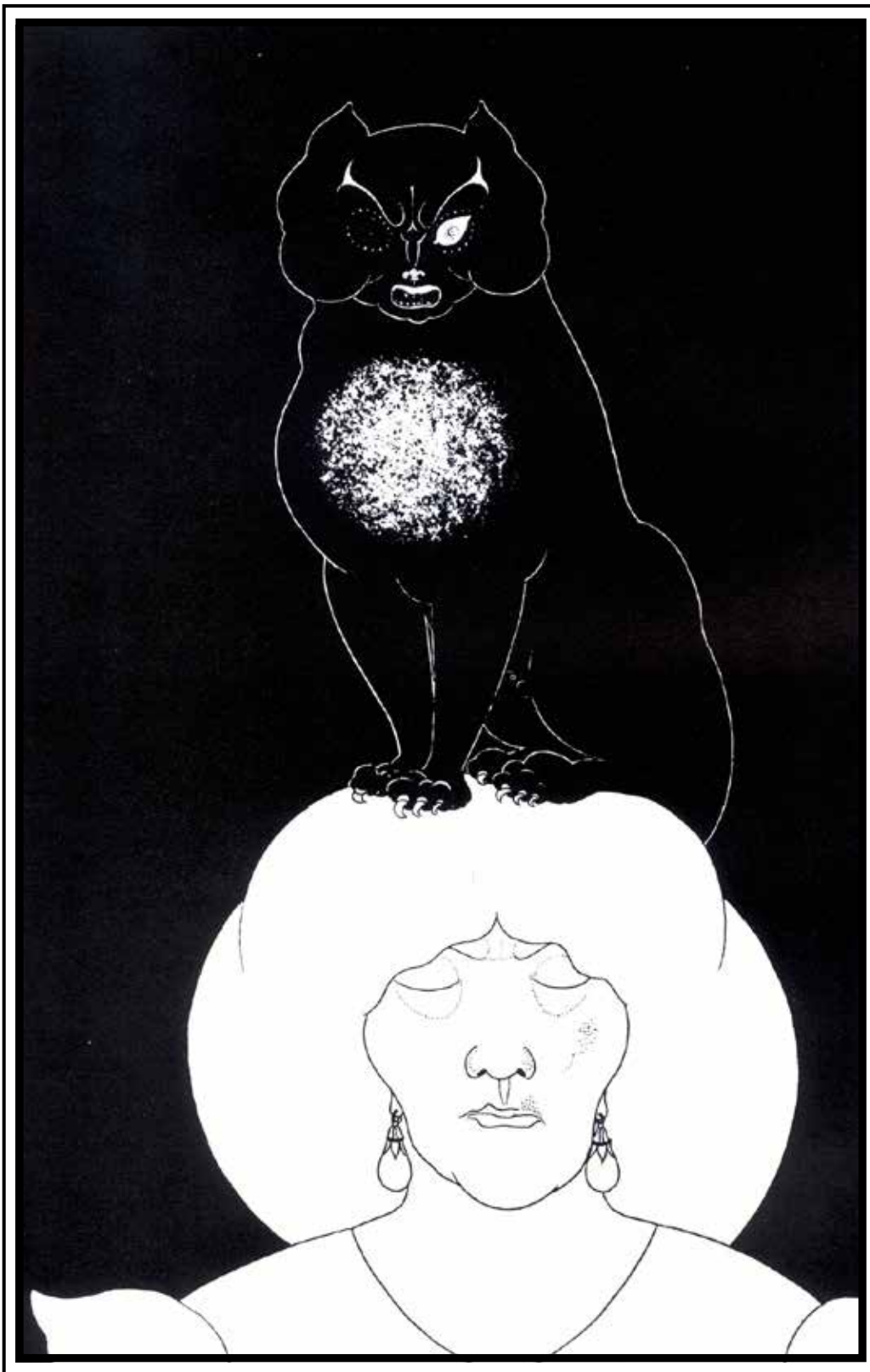
£19

*A one-act tragedy by Oscar Wilde*

The original version of the play was in French and during its translation into English in 1893, Beardsley was contracted to illustrate the scandalous drama. The illustrations weave together themes of sensuality and death, and was highly provocative. The play's publication created a sensation, just as Beardsley and Wilde had hoped.

The results of this collaboration made the friendship between the two quite tumultuous. Historically these two were described as close friends, but this closeness was deceptive. Those who knew and understood them recognised how very different their approaches to life and art were.

*"I have one aim – the grotesque. If I am not grotesque I am nothing."  
– Aubrey Beardsley*



## The Black Cat

*Teeda Rhum, Umeshu, Laphroaig,  
Okinawa Sugar*

••••

*A twist on a classic old fashioned,  
rich and complex with a hint of smoke*

£23

*One of four drawings illustrating Edgar Allan Poe's "Tales of Mystery and the Imagination"*

This illustrates Poe's story of a man who tries to cover up the murder of his wife by concealing her body in the wall. He is betrayed by the shrieks of his black cat, mistakenly enclosed in the wall as well. The furious one-eyed cat appears out of the darkness, its form outlined in white and starkly contrasting with the white of the dead woman's face.

*"Who has not, a hundred times, found himself committing a vile or a silly action for no other reason than because he knows he should not?" – Edgar Allan Poe*



## Volpone

*A comedy play by English playwright Ben Jonson*

Originally produced in early 1600s, the play is a merciless satire of greed and lust. Beardsley was commissioned to illustrate a special edition in November of 1897 with 24 illustrations but died before being able to complete the project. However, it was considered a beautiful combination of the comedy of corruption and Beardsley's ability to depict both decadence and wickedness with a light touch.

*"I carry Volpone about with me from dawn to dawn and dream of nothing else" – Aubrey Beardsley*

## Volpone

*Etsu Gin, Wasabi Liqueur,  
Citrus, Soap Bark*

••••

*Creamy and aromatic, a twist  
on a gin sour*

£18







## La Mort D'Arthur

*Rise Shochu, Yellow Chartreuse, Clarified  
Coconut & Pineapple*

••••

*Velvety and exotic with a round  
and mellow flavour*

£19

*15th Century Compilation by Thomas Malory*

The illustration of this piece was Aubrey's first commission at the age of 19. It is here that his signature sensuous, decadent style began its development. The use of floral motifs and monochrome design begin to introduce the influence of Japanese woodblocks, and it's here we first see the introduction of his iconic initials in a Japanese-inspired mark.

*"We shall now seek that which we shall not find." - Thomas Malory*

Chapter  
*Two*  
*The 108 Heroes of the  
Popular Suikoden*

---

PART 1

---

Utagawa Kuniyoshi



A Robin Hood-esque fable, the 108 Heroes of Suikoden was a story that gathered popularity in 19th century Japan. The characters and stories became a favoured subject for Japanese woodblock prints, which influence can be seen in Beardsley's work.

Embracing the Japanese culture of seasonality the following three drinks present the first installation of these warriors, centred around the precious and fragrant strawberry.



## Boyasha

*Strawberry, Tedorigawa Sake,  
Apple, Campari*

•••

*Sweet and bitter, light and refreshing*

£15

*Boyasha Sonjirô, the Amazon, binding an opponent whom she has overthrown together with his horse in the snow; she was the wife of Saiyenshi Chôsei.*



## Kikenji

*Strawberry, Tequila Blanco,  
Chilli Umeshu, Citrus, Red Perilla*

•••

*Citrusy and fruity with a hint of spice*

£17

*Kikenji Tokyô, bare-chested and tattooed, lifting a huge temple bell above a cowering foe.*



## Daitô

*Strawberry, Roku Gin, Italicus,  
The Aubrey Champagne*

•••

*Sparkling, citrusy and aromatic*

£18

*Daitô Kwanshō, fully armored, using the butt of his enormous glaive to parry stones flung by Botsu-usen Chōsei at the Battle of Tōshōfu.*

# Chapter

-Three-

## *The Japanese Ink in Aubrey's Pen*

Originating from the urban culture of Edo from 17th to mid 19th century, Ukiyo-e is one of the most interesting styles of Japanese painting. Translating to “pictures of the floating world”, this style of art presents themes and scenes of kabuki plays and erotica. Aubrey Beardsley drew heavy influence from ukiyo-e, as can be seen in his use of sharp lines and contrast in black and white. He was often described as having ‘japanese ink in his pen’.

These six drinks draw inspiration from this, with the use of simple colours and contrast through the classic style of Japanese Highballs. A selection of whiskey and shochu highballs (chuhais) each represented by a piece of ukiyo-e influencing Beardsley's work.





## Flowers of Edo

*Nikka From The Barrel, Housemade  
Yuzu Soda*

••••

*Fresh, sharp and aromatic*

£24

*“Flowers of Edo” by Kitagawa Utamaro. The use of fine, black lines and large black and white spaces dominate together to deliver the emotions and intensity of the characters depicted. Great similarities can be seen in Aubrey’s work through “The Black Cape”, illustrated for Oscar Wilde.*



## Obi

*Hatozaki Pure Malt,  
Cold Brew Oolong Sparkling Tea*

••••

*Slightly roasted aroma of Oolong tTea,  
herbal and smooth*

£21

*After the Meiji era (1868-1912), Taisho Romanticism began to blossom, where Western tastes were incorporated into the traditional kimono and obi (sash).. With the spread of chemical dyes and the influence of Art Nouveau, modern kimonos with vivid colours and shapes became popular.*





## Bijin-ga

*Sweet Potato Shochu, Soda, Umeshu*

•••

*Classic Whisky Highball, with  
a hint of Mandarin*

£21

*“Bijin-ga”, a generic term of pictures of beautiful women in Japanese art, particularly woodblock printing in the ukiyo-e genre.*



## Toto Sundai

*Chita Whisky, Soda, Citrus*

••••

*Sweet and refreshing with a touch of plum*

£20



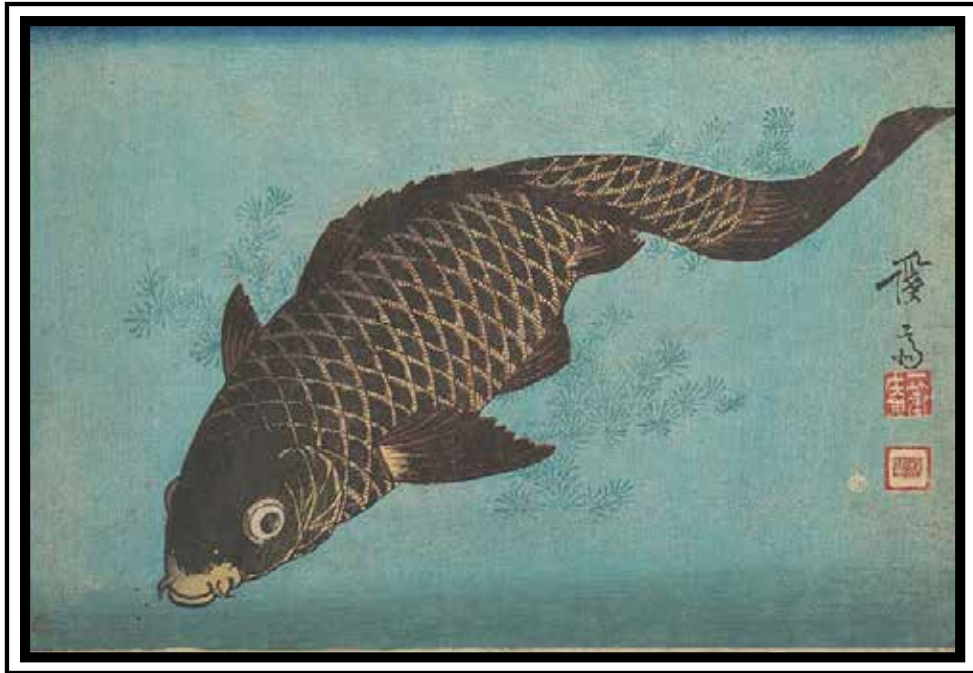
## Torii

*Rice Shochu, Housemade  
Grapefruit Soda*

••••

*Slightly bitter, citrusy, with a grapefruit aroma  
£18*

*'Kamisuki'. From the series "Twelve Aspects of Woman" by Torii Kotondo.*



## Koi

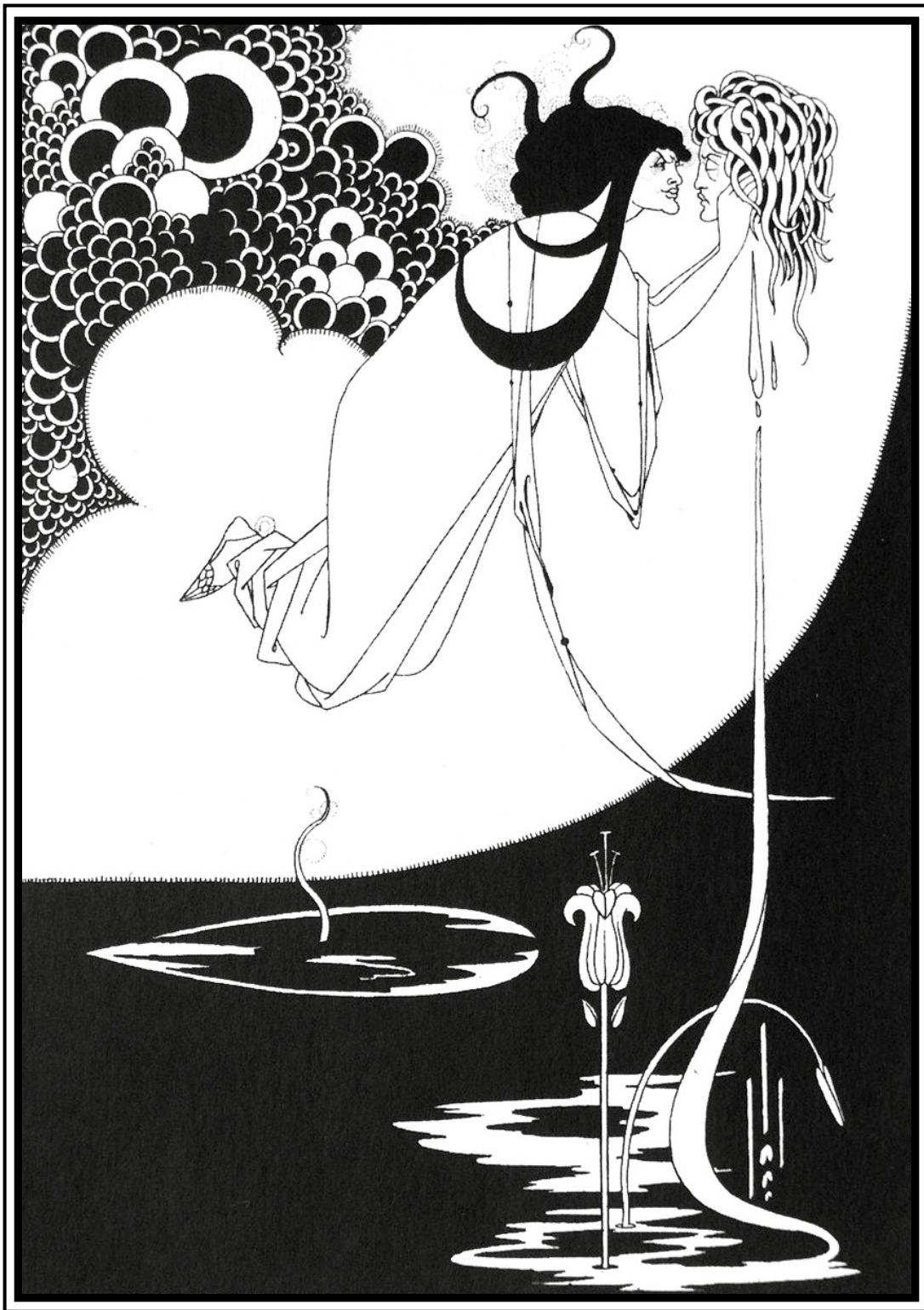
*Barley Shochu, Soda, Citrus*

••••

*Traditional Japanese chūhai, dry,  
intense and clear*

£16

*As ukiyo-e popularity grew, the koi carp became a popular subject for artists to depict. The carp are often used symbolically, either representing people swimming through an "ocean of suffering", or reflecting the zen quality of finding peace.*



# Non-Alcoholic

Inspired by flavours and ingredients

## The Climax

*Amarico, Everleaf Mountain, NLL  
Salcombe, London Essence Tonic Water*

••••

*Refreshing and complex, with citrus notes  
and a hints of fresh botanicals*

£12



## The Woman in the Moon

*Soy Milk, Edi CBD, Sea Salt Water,  
Toasted Genmaicha Tea*

••••

*Unique herbal taste of eucalyptus combined  
together with toasted tea notes and a smooth  
and creamy texture.*

£12



## Madame Rejane

*Amarico, Clean&Co Rhubarb, Orange  
and Pink Grapefruit Juice*

••••

*Energetic and complex this is a twist on  
classic Garibaldi cocktail with a  
hint of rhubarb and a slightly bitter finish*

£12

\*\*\* *Gin & Genever* \*\*\*

<i>Japan</i>	135 East	18
	Etsu	18
	Etsu Ocean Water	18
	Ki No Bi	18
	Kokoro	15
	Nikka Coffey	16
	Roku	16
	Yuzu Gin	18
<i>England</i>	Cambridge Distillery Japanese	16
	Jensens London Dry	14
	Jensens Old Tom	14
	Martin Miller's	16
	Nicholson London Dry	15
	Plymouth London Dry	14
	Sipsmith London Dry	13
	Tanqueray	12
	Tanqueuray Ten	16
<i>Germany</i>	Monkey 47	16
<i>Italy</i>	Ginepraio London Dry	15
<i>Scotland</i>	Hendrick's	12
<i>Spain</i>	Gin Mare	14

\*\*\* *Vodka* \*\*\*

<i>Japan</i>	Snow Queen	12
	Haku	14
	Nikka Coffey	16
<i>Russia</i>	Beluga Gold Line	34
	Stolichnaya Elit	19
<i>Poland</i>	Belvedere	13
	Konik's Tail	15
<i>France</i>	Grey Goose	16
	Sauvella	12
<i>Netherlands</i>	Ketel One	12

\*\*\* *Agave Spirits* \*\*\*

<i>Oaxaca</i>	Alipus San Andres	17
	Del Maguey Mezcal Vida	17
<i>Jalisco</i>	Fortaleza Blanco	20
	Fortaleza Reposado	23
	Don Julio Anejo 70	24
	Montelobos Espadin	16
	Ocho Blanco	12

Please note all prices include VAT at the current rate  
A discretionary service charge of 13.5% will be added to your bill

Please note all prices include VAT at the current rate  
A discretionary service charge of 13.5% will be added to your bill

\*\*\* *Agave Spirits* \*\*\*

<i>Jalisco</i>	Casamigo's Blanco	16
	Casamigo's Reposado	18
	Casamigo's Anejo	21
	Illegal Reposado	24
	Los Danzantes Reposado	18
	Los Danzantes Anejo	20
	Maestro Dobel Humito	16
	Maestro Dobel Diamante	23
	Maestro Dobel 1969 Extra Anejo	150
*** <i>Rum/Rhum</i> ***		
<i>Puerto Rico</i>	Bacardi Carta Blanca	12
	Bacardi 8 years	18
<i>Venezuela</i>	Diplomatico Reserva	14
<i>Bermuda</i>	Gosling's	11
<i>Cuba</i>	Havana Club 7	11
	Matusalem 23	14
<i>Caribbean Islands</i>	Drooly's 12	12
	Plantation 3 Stars	11
	Plantation Original	13
	Plantation Barbados 5	14
	Plantation OFTD	12
<i>Japan</i>	Teeda 5	16
<i>Guatemala</i>	Ron Zacapa XO	40
	Zacapa	19
<i>Brazil</i>	Yaguara Branca	11

*Please note all prices include VAT at the current rate  
A discretionary service charge of 13.5% will be added to your bill*

\*\*\* *Whisk(e)y* \*\*\*

<i>USA</i>	Bulleit Rye	12
	Ezra Brooks	11
	Jack Daniel's Single Barrel	12
	Maker's Mark	13
	Michter's 10 Year Bourbon	50
	Michter's 10 Year Rye	60
	Michter's US*1	18
	Michter's US*1 Small Batch	18
	Michter's US*1 Single Barrel	18
	Rebel Yell	14
	Rittenhouse Rye	12
	Wild Turkey Rye	11
	Woodford Reserve	14
<i>Scotland- Blended Scotch</i>	Chivas Mizunara	15
	Johnnie Walker Black	14
	Johnnie Walker Blue	39
	Johnnie Walker Gold	18
	Ardbeg 10	16
	Auchentoshan Three Wood	17
	Balvenie 12	12
	Bowmore 12	11

*Please note all prices include VAT at the current rate  
A discretionary service charge of 13.5% will be added to your bill*

\*\*\* Whisk(e)y \*\*\*

<i>Scotland- Single Malt</i>	Bunnahabhain	12	15
	Caol Ila	12	16
	Dalwhinnie	15	15
	Glenfarclas	25	45
	Glenfiddich	21	50
	Glenlivet	18	30
	Glenmorangie	18	25
	Lagavulin	16	22
	Laphroaig	10	14
	Macallan	12	26
	Macallan	18	86
	Oban	14	17
	Port Askaig	10	25
	Singleton	12	13
	Singleton	18	22
	Springbank	15	23
	Talisker	18	29
<i>Japan</i>	Hakushu Distiller's Reserve		22
	Hakushu	12	60
	Hatozaki Pure Malt		17
	Hibiki	17	150
	Hibiki	21	200
	Nikka Miyagikyo		26
	Nikka from the Barrel		18
	Nikka Coffey Grain		19

Please note all prices include VAT at the current rate  
A discretionary service charge of 13.5% will be added to your bill

\*\*\* Whisk(e)y \*\*\*

	Nikka Tailored		38
	Suntory Chita		16
	Taketsuru	17	160
	The Matsui Mizunara Cask		42
	The Matsui Sakura Cask		42
	The Kurayoshi Pure Malt	18	69
	The Kurayoshi Pure Malt		36
	The Kurayoshi Sherry Cask		32
	The Kurayoshi	8	36
	The Kurayoshi	12	42
	The Kurayoshi	18	76
	The Tottori		16
	The Tottori Bourbon Barrel		18
	Toki		12
	Yamazaki Distiller's Reserve		22
	Yamazaki	12	37
	Yamazaki	18	145
	Yamazakura Fine Blended		18
	Yoichi		25
<i>India</i>	Amrut		16
<i>Taiwan</i>	Kavalan Concertmaster		22
	Kavalan		23
	Kavalan Solist		97
<i>Ireland</i>	Jameson		10
	Redbreast	12	14
	Teeling Single Malt		17

Please note all prices include VAT at the current rate  
A discretionary service charge of 13.5% will be added to your bill



\*\*\* French Distillates \*\*\*

<i>Calvados</i>	Adrian Camut 6	22
<i>Cognac</i>	Hennessy XO	40
	Louis XIII	320
	Martell Cordon Bleu	24
	Martell XO	38
	Remy Martin VSOP	13
	Dupon Horse D age	40
	Darroze 8	14
	Baron De Sigognac 20	16
	Baron Gaston Legrand XO	45

\*\*\* Zero Proof \*\*\*

	Seedlip Garden	7
	Seedlip Spice	7
	Lucky Saint	7
	Bellino	9

\*\*\* Beer & Cider \*\*\*

	Asahi Dry Draught	9
	Hitachino Bottle Amber Ale	9
	Hitachino Bottle White Ale	9
	Eric Bordelet Jus de Pommes A Sydre	20
	Eric Bordelet Poiré Granit	20

\*\*\* Shochu & Awamori \*\*\*

<i>Shochu</i>	Satoh Sweet Potato Shochu / 25% / 75cl	16
	Toyonaga Honkaku Rice Shochu / 24% / 75cl	14
	Yamanomori Shochu / 25% / 75cl	13
	A Shochu Kohaku No Madorimi	12
<i>Awamori</i>	A Mild Mizuho Ryukyu Awamori 5yr	16

Please note all prices include VAT at the current rate  
A discretionary service charge of 13.5% will be added to your bill

\*\*\* Tea Selection \*\*\*

<i>Japan</i>	Sencha Reiwa   Shizuoka	8
	<i>A supreme grade of Shincha Sencha picked in spring 2021. Refreshingly complex and sappy with deep, savoury umami and intense vegetal sweetness in a concentrated, smooth infusion.</i>	
	Hojicha   Kagoshima	8
	<i>A highly aromatic green tea with notes of toasted sesame and an umami richness. Hints of caramel sweetness, savoury notes and plenty of warming, roasted depth. A real comfort drink for any time of day.</i>	
	Genmaicha   Shizuoka	8
	<i>A beautiful balance of spring picked and steamed bancha green tea, combined with high quality, roasted and puffed mochigome rice, for a delectable toasted, warming flavour.</i>	
	Matcha   Kagoshima	12
	<i>Pleasant richness, it expresses the vivid taste of the single Okumidori cultivar, with exceptional character, floral notes and deep, vegetal umami.</i>	
<i>Taiwan</i>	Oolong Jin Xuan   Ali Shan	8
	<i>Uniquely creamy with floral notes and spring woodland freshness. An outstanding expression of high mountain oolong tea, grown in the lofty heights of one of Taiwan's most breathtaking national parks.</i>	
<i>Thailand</i>	Lemongrass & Ginger	8
	<i>Comprising two simple, natural ingredients – intensely fresh lemongrass and satisfyingly warm ginger – this herbal infusion is bright, zesty and invigorating.</i>	
<i>Sri Lanka</i>	Earl Grey   Ruhuna	8
	<i>An invigorating black tea lifted by fresh and exuberant citrus. For supreme texture and flavour, a touch of natural bergamot extract tempers the tea's inherent richness.</i>	

Please note all prices include VAT at the current rate  
A discretionary service charge of 13.5% will be added to your bill

ك